



### < Indications >

- Intervertebral disk disorders
- Spinal canal stenosis
- Chronic back pain
- Pain syndrome

# Epidural Endoscopic Catheter

*i* DOLPHIN

# *i* DOLPHIN MICRO ENDOSCOPE

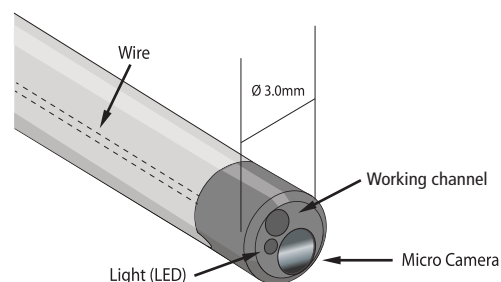
Small,  
strong & specific.  
Ensures easy and safe treatment  
through an accurate visual aid.



## Main Features

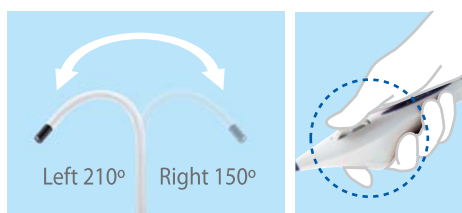
### Micro endoscope

*i*DOLPHIN is an ultra-small endoscope consisting of a 3mm tube with a camera, a lever for handling this tube and camera, optical fibers, and a fluid tunnel for conveying light. It captures the inside of the human body through the camera attached to the front tip of the tube and the light source conveyed through the optical fibers. When you connect the camera connection wire to the light device, the embedded camera and optical fibers (light) are immediately activated, and you can capture the images of the desired site and inject drugs from the front end of the main tube.



### Free tube angle adjustment

You can rotate *i*DOLPHIN up to 210° to the left and 150° to the right by rotating the lever on it.

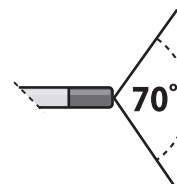


• Steerable tip

• Steering Lever

### Wide view

The wide-view angle of about 70° reduces blind spots when you capture the diseased area.



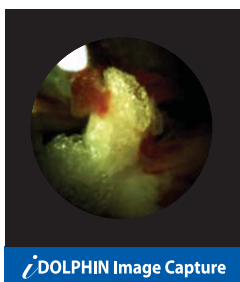
## < Excellent specifications of iDOLPHIN >

- ▶ The world's first integral microendoscopic catheter
- ▶ Microendoscopic camera with High resolution
- ▶ Disposable, with a reduced risk of infection
- ▶ Compact mobile image processor



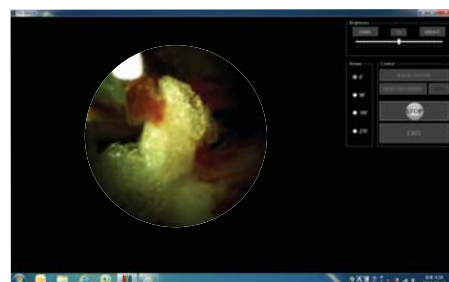
### Clear image

iDOLPHIN has a high-performance camera whose resolution is at least four times as high as those of the competing products, and offers unequalled image quality, enabling more accurate diagnosis and operation (when Spine is applied).



### Easy-to-use Program

iDOLPHIN offers a dedicated application program for image capture and video recording that is easy, simple and intuitive.



### View box for controlling the illumination intensity

The aluminum case's features include compact size, stable weight, and simple control.

It is convenient because you can directly adjust the illumination intensity on the view box itself instead of the PC.



### Minimization of patient's wound and pain

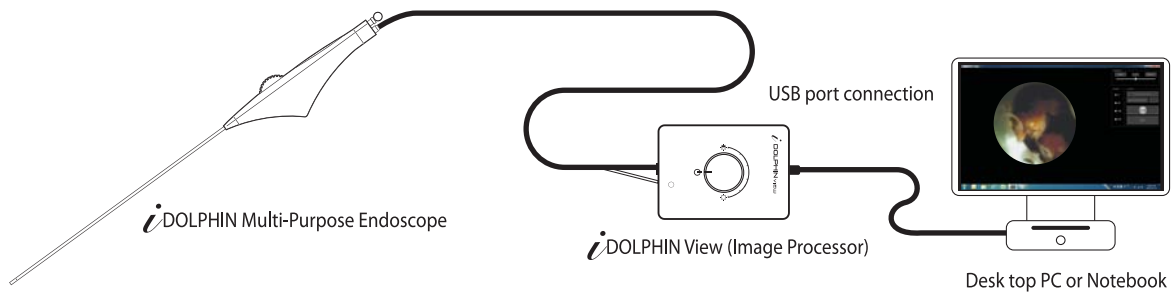
A slender tube with a 3 mm diameter minimizes the cutting area, which reduces the pain and recovery time of the patient's wound.

### Safe from infection

Infection is a great concern for medical staff.

You do not have to worry about infection because iDOLPHIN is a sterilized disposable product.

## Configuration of *i*DOLPHIN



## *i*DOLPHIN Specification

Type	Endoscope
Tube Length	300mm
Power Cable	2 m
Angle of View	Min. 70°
Angle of Curve	(L) 210° / (R) 150°
Electrical Requirements	Max 3.6mW, 1.8V 2mA
Effective Pixels	60,025 (245 x 245)

## *i*DOLPHIN VIEW Specification

Type	Light source	
LED	Power	0.5A(2.5W)
	Color	White
	Control	0~100(knob)
Frame	23Frame/sec	
Utility	Window XP or Window 7	

## META BIOMED CO.LTD

270,Osongsaengmyeong1-ro,Osong-eup,Heungdeok-gu,  
Cheongju-si,Chungcheongbuk-do,Korea  
Tel: +82-43-216-0433  
Fax:+82-43-217-1988  
E-mail: idolphin@meta-biomed.com  
Web site: <http://www.meta-biomed.com>